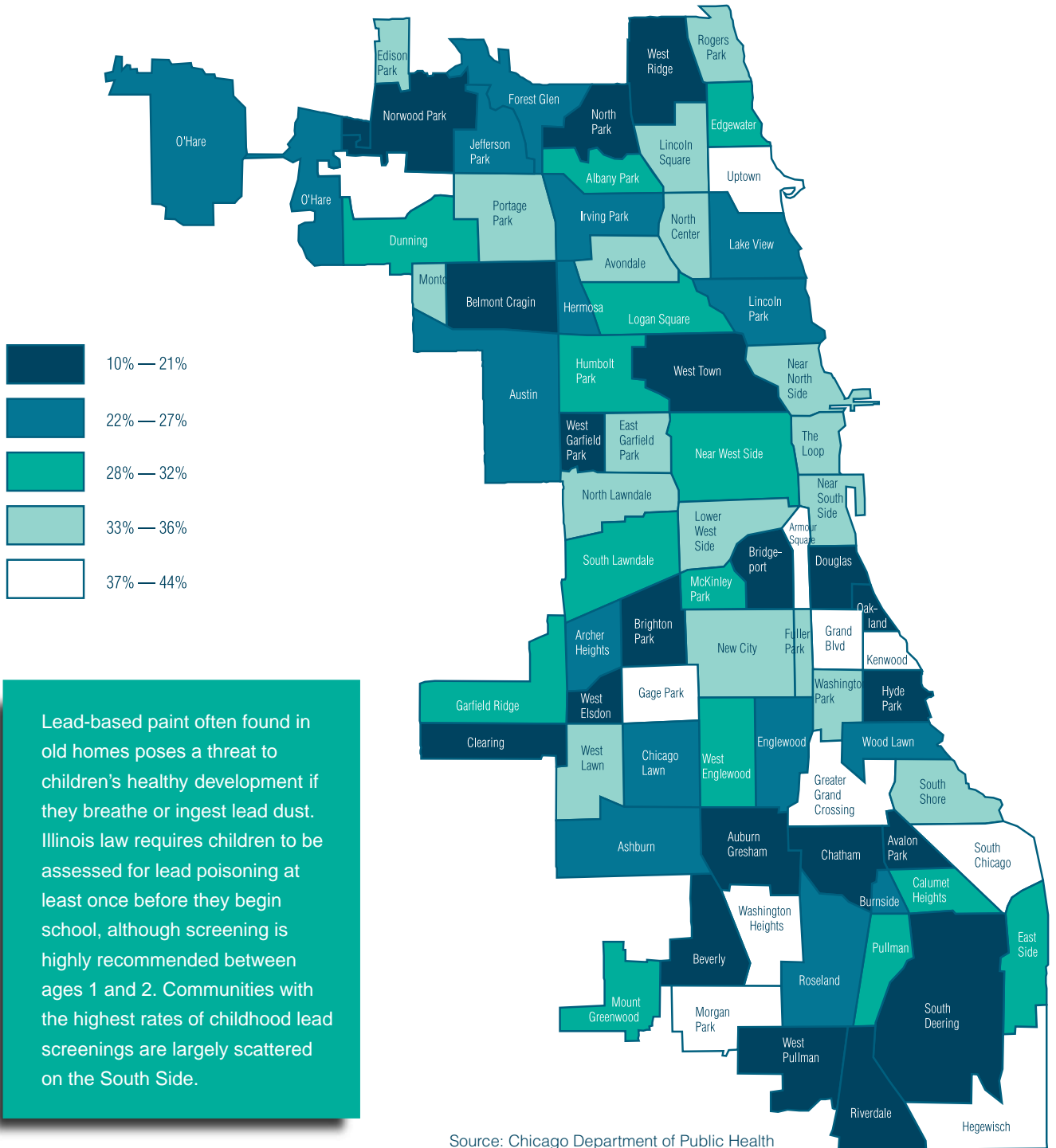
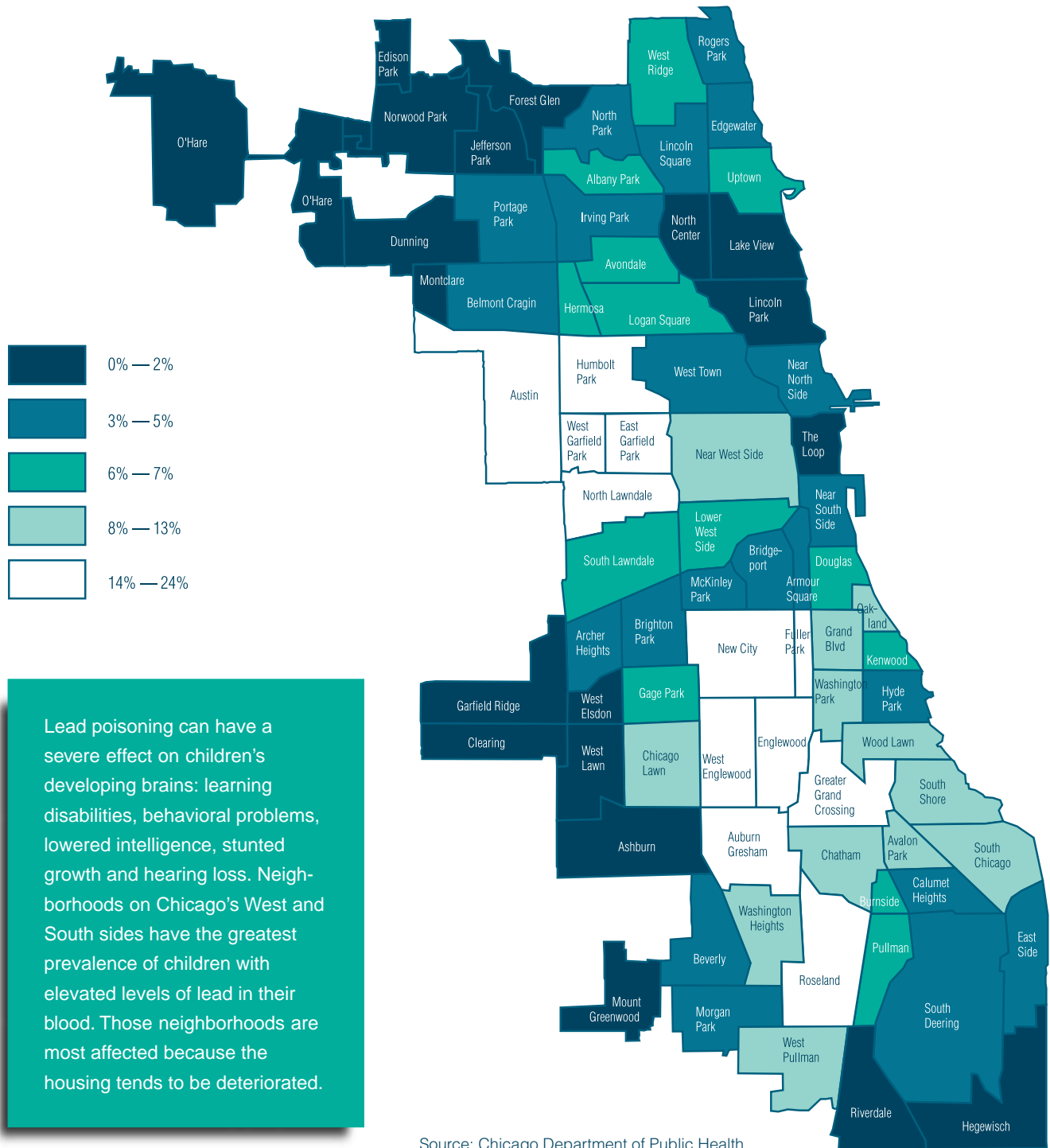


Children Tested for Lead Poisoning, 2002



Children with High Blood Lead Levels, 2002



Lead poisoning can have a severe effect on children's developing brains: learning disabilities, behavioral problems, lowered intelligence, stunted growth and hearing loss. Neighborhoods on Chicago's West and South sides have the greatest prevalence of children with elevated levels of lead in their blood. Those neighborhoods are most affected because the housing tends to be deteriorated.

Source: Chicago Department of Public Health